



MONTHLY MEMBERSHIP PROGRESS REPORT

District 306 A1

Results as of: 5/31/2016

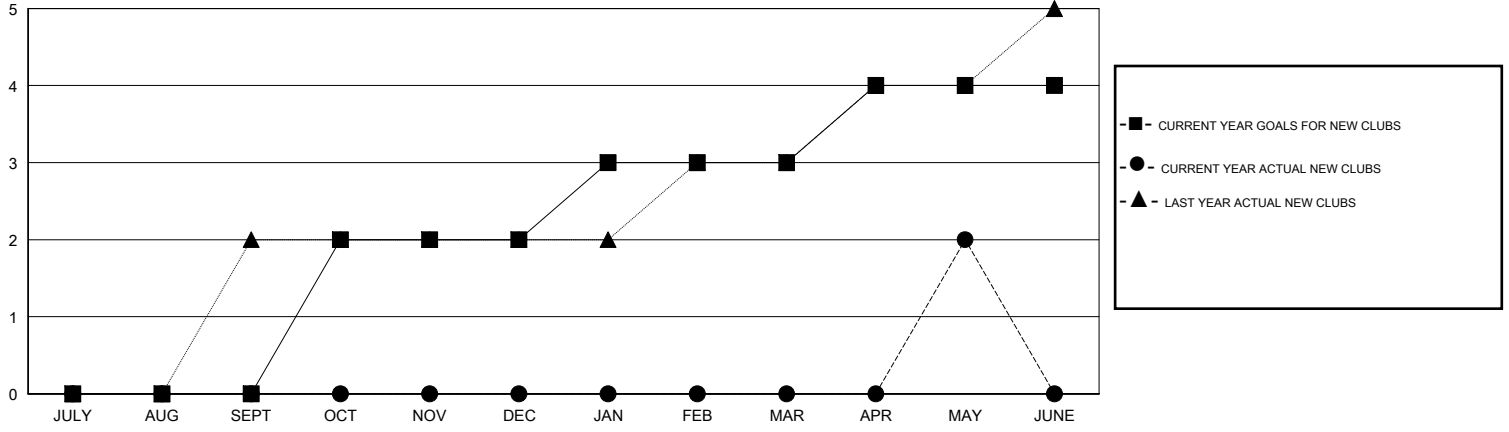
GMT: Mahesh Pasqual

LOCATION REP OF SRI LANKA

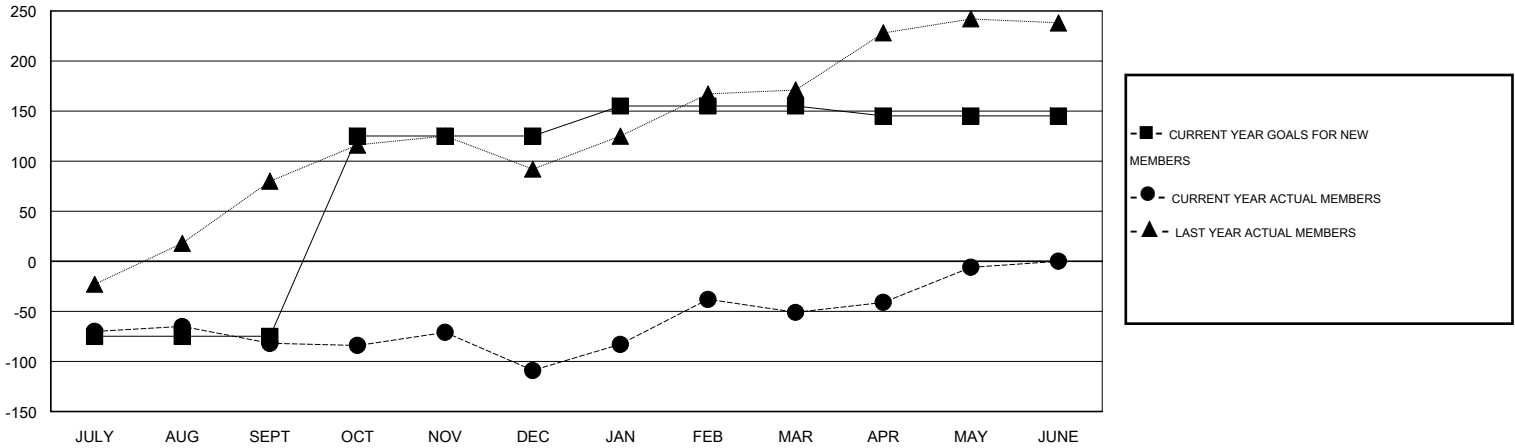
GMT CA 6

Clubs					Members				
RESULTS FOR 2015-2016					RESULTS FOR 2015-2016				
QUARTER	NEW CLUB GOAL	NEW CLUBS	DROPPED CLUBS	NET GAIN/LOSS	QUARTER	NEW MEMBER GOAL	CHARTER AND NEW MEMBERS ADDED	DROPPED MEMBERS	NET GAIN/LOSS
JULY/AUG/SEPT	0	0	2	-2	JULY/AUG/SEPT	-75	27	109	-82
OCT/NOV/DEC	2	0	2	-2	OCT/NOV/DEC	200	37	64	-27
JAN/FEB/MAR	1	0	1	-1	JAN/FEB/MAR	30	96	38	58
APR/MAY/JUNE	1	2	0	2	APR/MAY/JUNE	-10	63	18	45

GOALS AND ACTUAL NEW CLUBS CUMULATIVE



GOALS AND ACTUAL MEMBERS CUMULATIVE



DROPPED CLUBS: 5	42 CLUBS OF 77 ADDED 1 OR MORE NEW MEMBERS	<u>GENDER DISTRIBUTION</u>	
<u>DROPPED MEMBERS</u>		MALE	1,322 (75.72%)
DECEASED	7	FEMALE	424 (24.28%)
CLUB CANCELLED	75	FAMILY UNIT MEMBERS 592 HEAD OF HOUSEHOLD 275 NON-HEAD OF HOUSEHOLD 317	
OTHER	147		
TOTAL	229		
CLICK HERE FOR HEALTH ASSESSMENT DATA			